

For troubleshooting and maintaining the LPKF milling machine and its supporting programs

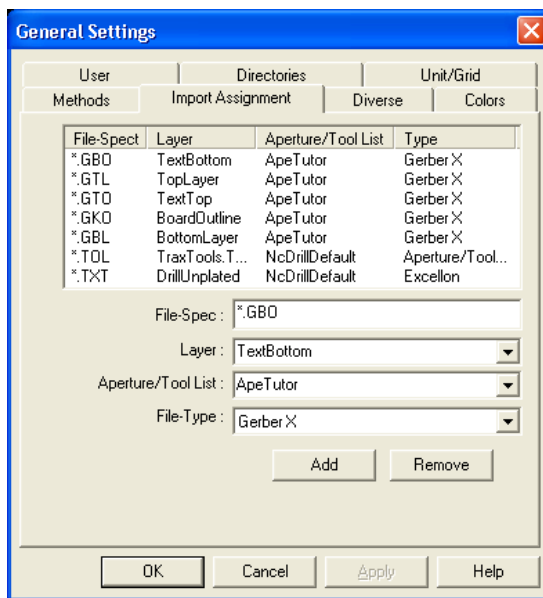
Created by
Seth DeCato
March 2010

Purpose: to aid lab assistants in using and maintaining the LPKF milling machine.

I. Trouble Shooting

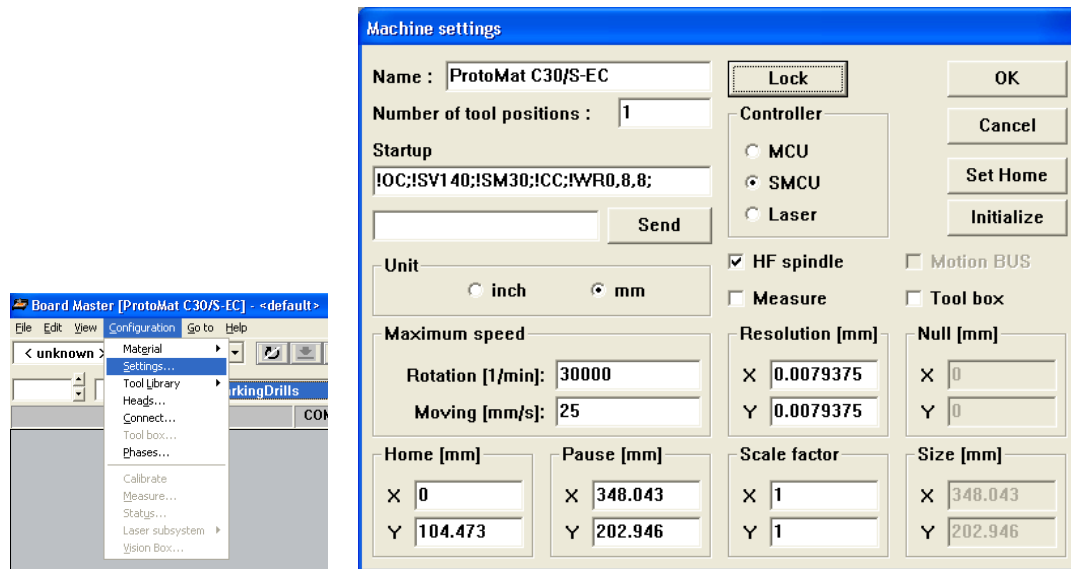
- A. Circuit Cam: When you are importing the files if they aren't automatically loaded then you will need to go into Config > General Settings and add or change the following file extensions to match the following

File – Spec	Layer	Aperture/Tool List	Type
*.GBO	Text Bottom	ApeTutor	Gerber X
*.GBL	Bottom Layer	ApeTutor	Gerber X
*.GTO	Text Top	ApeTutor	Gerber X
*.GTL	Top Layer	ApeTutor	Gerber X
*.GKO	Board Outline	ApeTutor	Gerber X
*.TOL	TraxTools.TXT (NcDrill)	NcDrill Default	Aperture/Tool Select
*.TXT	Drill Unplated	NcDrill Default	Excellon

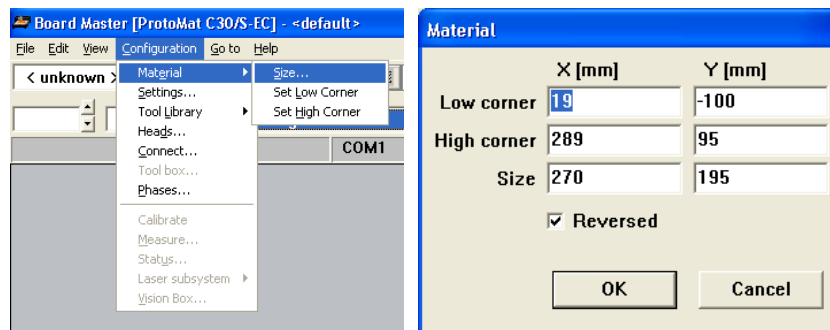


B. Board Master:

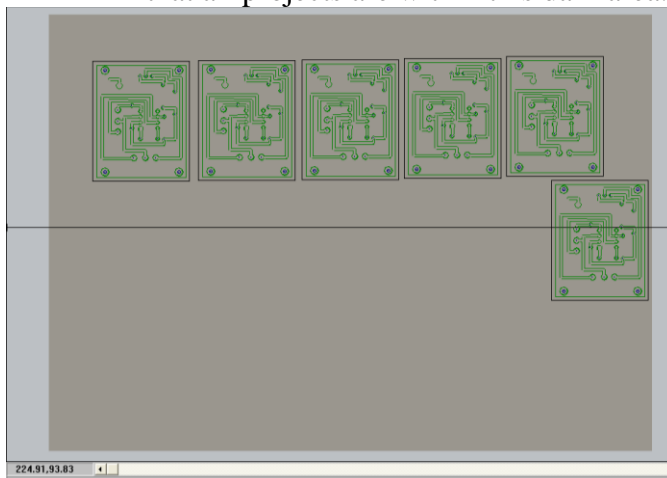
1. If there are any problems with alignment make sure that the board is properly inserted on the reference pins and that it is taped down
2. Check the machine dimension settings by going to Configuration > settings and verify that all the settings are correct



3. Check that the project you are working on is within the boundaries for milling by going to configuration > material > size and input the following dimensions



When you hit “OK” you will see a dark square appear on the machine mat. Verify that all projects are within this dark area.



II. Maintenance

A. Cleaning and oiling

1. See http://www.lpkfusa.com/downloads/support/docs/man_c30s.pdf page 48 for maintenance instructions on cleaning and lubing the machine.
2. Best to do this once every year or two. Because we don't use the machine a lot

B. Changing vacuum bag

1. Behind the machine is where the vacuum is located you will need to clean the filter and empty the bucket at end of each year.