



# ADOBE INDESIGN

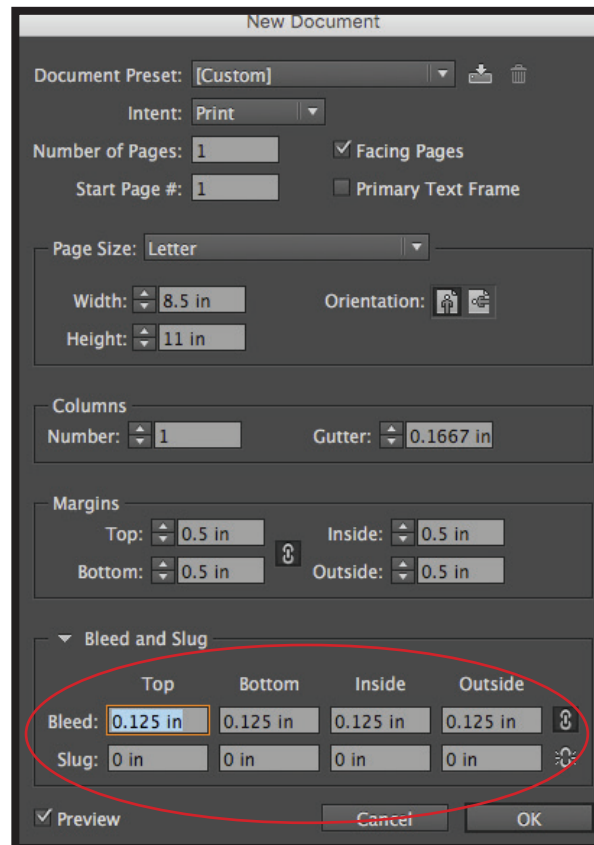
## What is a bleed?

If you want any image, colors, and/or design to reach the edge of the printed page (no white margin), the computer file you provide must be specifically designed to have a bleed. A bleed is basically colors or image stretched or “bleeding” outside of the cut line, so that the colors could be printed to the edge of the paper without showing white margins. If your final print piece has a white border, it does not need a bleed.

1. Start a new document in InDesign. Set page size.

If your document needs a bleed: Set the **bleed** to 0.125” on all sides. This can be found under the “Bleed and Slug” section (Click on drop down arrow if content is not showing).

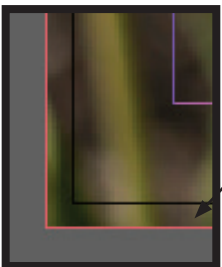
When your document opens you will see a **red box** surrounding the page area, this is the **bleed**.



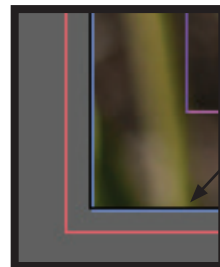
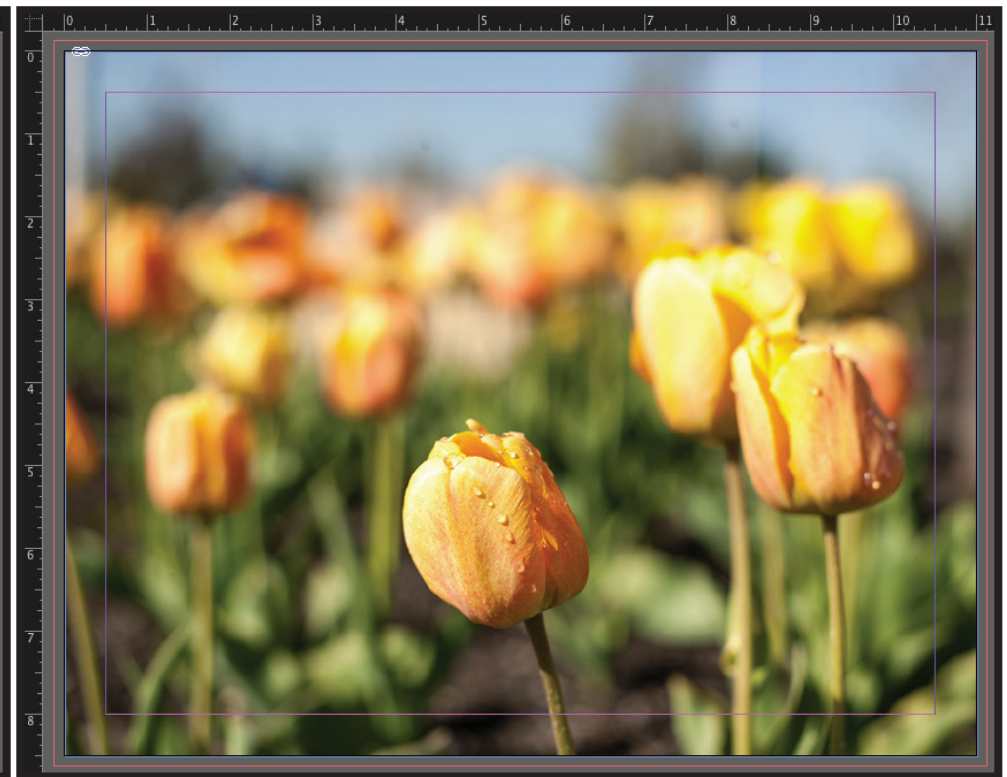


# ADOBE INDESIGN

2. It is very important to extend the object you want to **bleed** all the way to the **red box**, not just to the edge of the paper. Below are examples of correct and incorrect ways of using **bleeds**. The **purple box** represents a “safety zone”, which is a buffer zone of 0.25” in from the cut size on all four sides. Any important elements should be kept within this “safety zone”.



Correct use of Bleeds:  
Image is going past paper size.



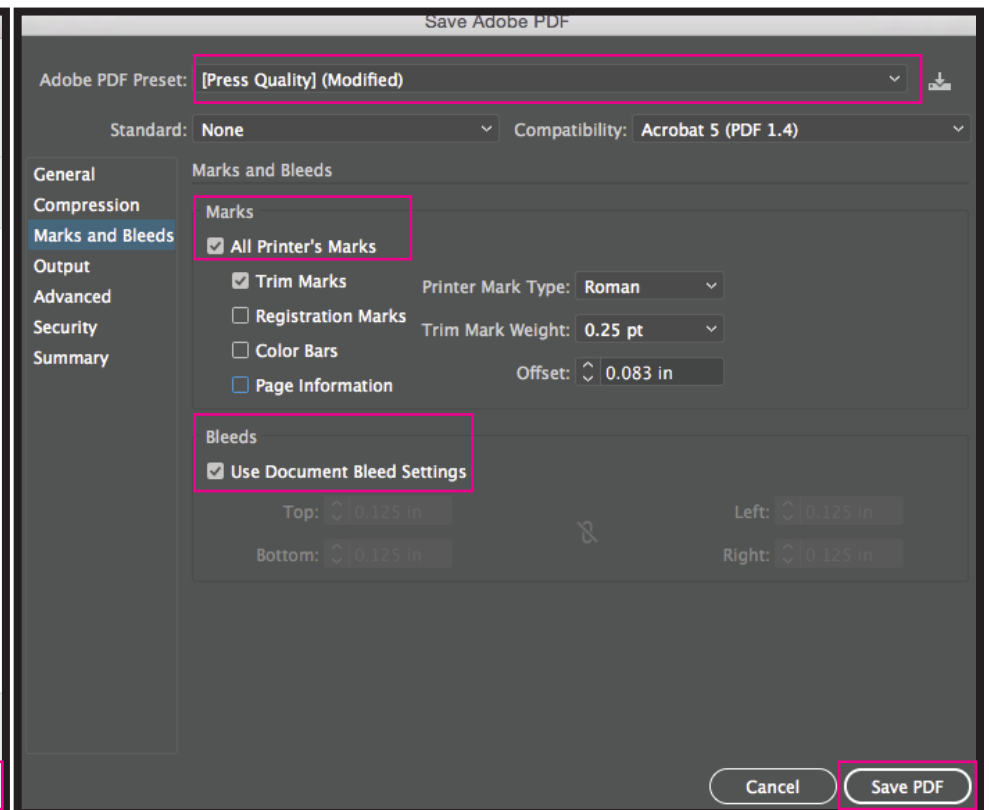
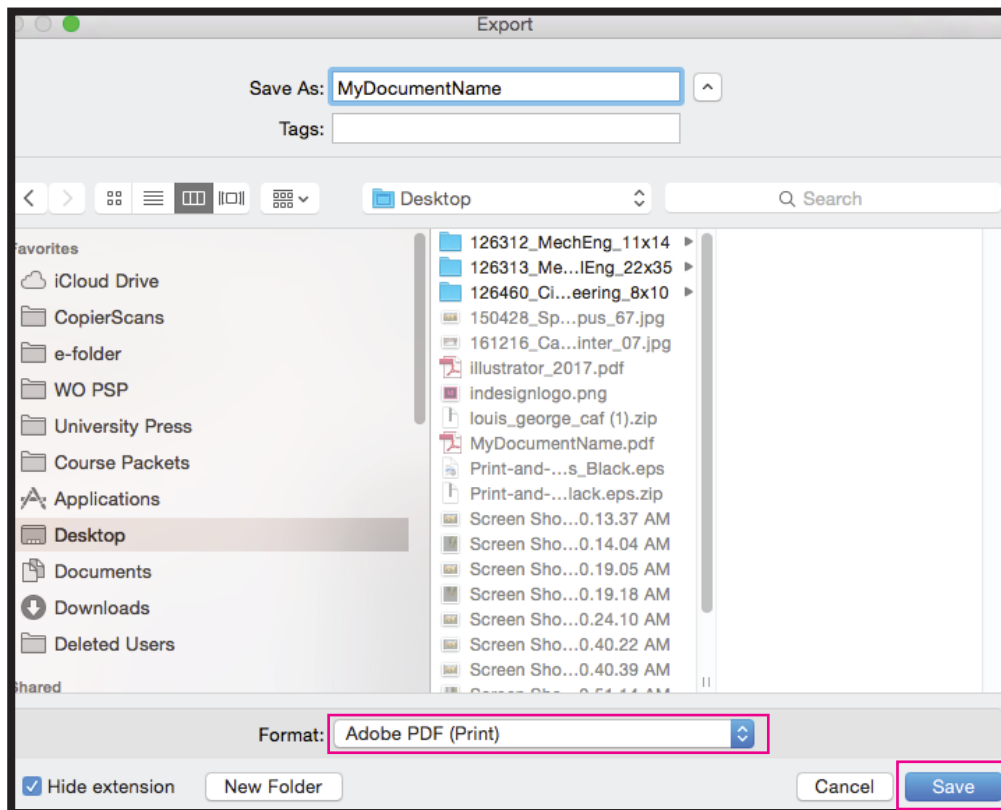
In-Correct use of Bleeds:  
Image is only aligned with the paper size.



# ADOBE INDESIGN

3. Choose File, Export  
When the Save As window opens: name your file, choose the location where you want the file saved, and then select *Adobe PDF (Print)* from the Format drop-down list. Click Save.

4. When the Save Adobe PDF window opens, you will want to choose Press Quality from the Preset drop-down list. Click on Marks and Bleeds from the left menu bar. To add crop marks, check the box next to Trim Marks. Then check the box, Use Document Bleed Settings. This will apply bleeds for printing. Click Save PDF.





# ADOBE INDESIGN

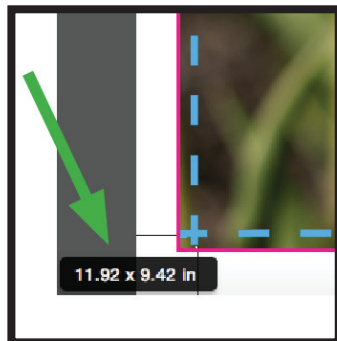
**5.** Open your PDF file in Adobe Acrobat or Reader to proof your file.  
Check for the 3 main points to a print ready file:

- **Bleeds**
- **Crop/Trim Marks**

*Blue dotted line is to show where the cutting will take place*

- **File Size**

*The file size will appear when you move the cursor to into the bottom left-hand corner of screen.*



This example shows:  
File size with a bleed is: 11.92 x 9.42 inches  
Finished & Cut size will be: 11 x 8.5 inches

**NOTE:** Printing documents with a bleed will require larger paper!

